



# INDOFINE Chemical Company, Inc.

121 Stryker Lane, Bldg. 30, Suite 1 • Hillsborough, NJ 08844 • U.S.A.

Phone: (908) 359-6778 • FAX: (908) 359-1179

website: [www.indofinechemical.com](http://www.indofinechemical.com)

e-mail: [chemical@indofinechemical.com](mailto:chemical@indofinechemical.com)

## CERTIFICATE OF ANALYSIS

Catalog Number: M-406

Product Name: **8-METHYLFLAVONE**

CAS No.: [70794-01-3]

Lot Number: 0403069

Chemical Formula: C<sub>16</sub>H<sub>12</sub>O<sub>2</sub>

Molecular Weight: 236.27

Melting Point 168-169.8°C

Appearance: White powder

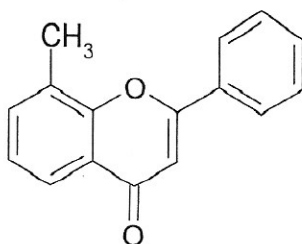
Solubility: Soluble in Chloroform

IR Spectrum: Enclosed

NMR Spectrum: Enclosed (conforms to the structure)

Storage: Store in a cool, dry place

Purity(HPLC) : 99+%



Prepared by:  
Ramesh Mandadi  
Ramesh Mandadi  
Director of Operations

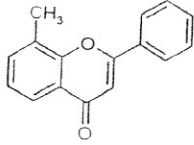
Reviewed and approved by:  
Sujata Moton  
S. Moton  
VP



INDOFINE Chemical Company, Inc.

121 Stryker Lane, Bldg. 30  
Hillsborough, NJ 08844 USA  
Phone: (908) 359-6778; Fax: (908) 359-1179

## HPLC ANALYSIS



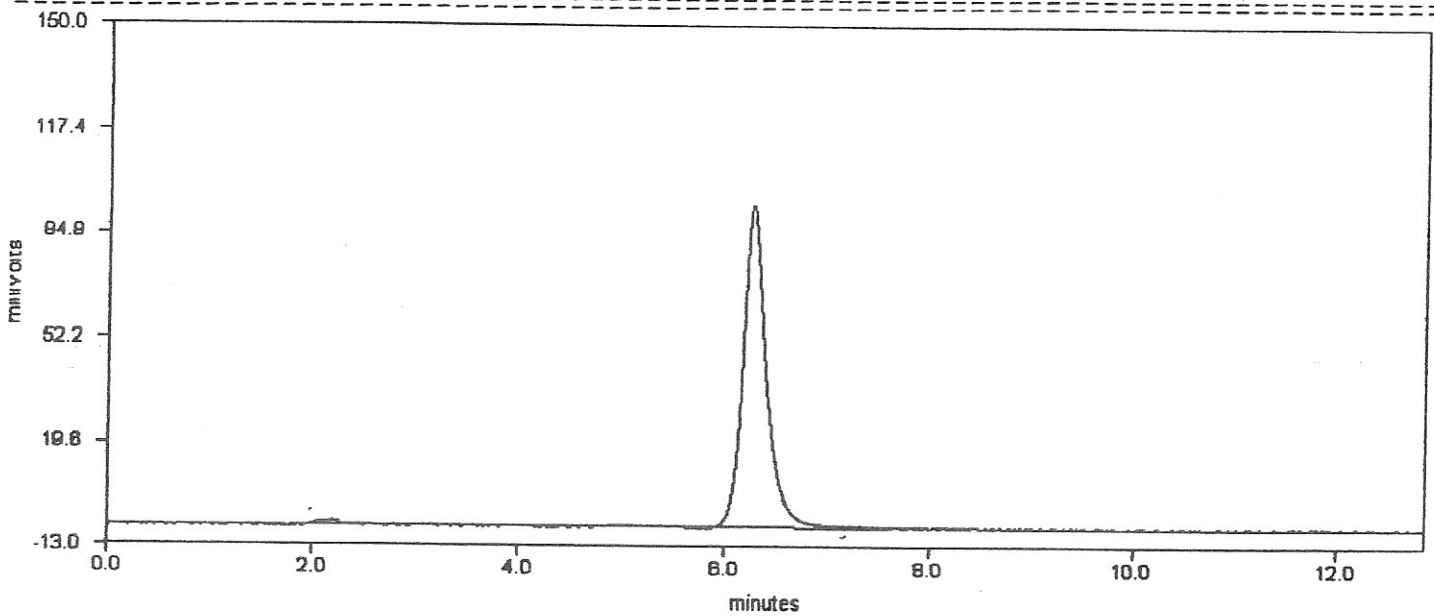
Catalog No.: M-406  
Product Name: 8-Methylflavone  
Lot No.: 0403069

WAVELENGTH ; 254nm  
MOBILE PHASE; A.C.N : WATER (70:30)

FLOW RATE : 0.7ml/min  
CLOUMM : C18

DELTA CHROMATOGRAPHY DATA SYSTEM

STRIPCHART PLOT FOR CHROMATOGRAM



LISTING PEAK TABLE FOR CHROMATOGRAM

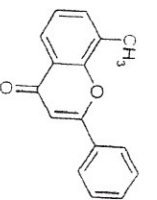
#	Type Name	Ret.Time	Area(uVSec)	Height(mV)	Area Percent
1	MM	2.19	15610	1.4	1.0
2	BB	6.25	1601750	100.4	99.0

Prepared by:  
Ramesh Mandadi  
Ramesh Mandadi  
Director of Operations

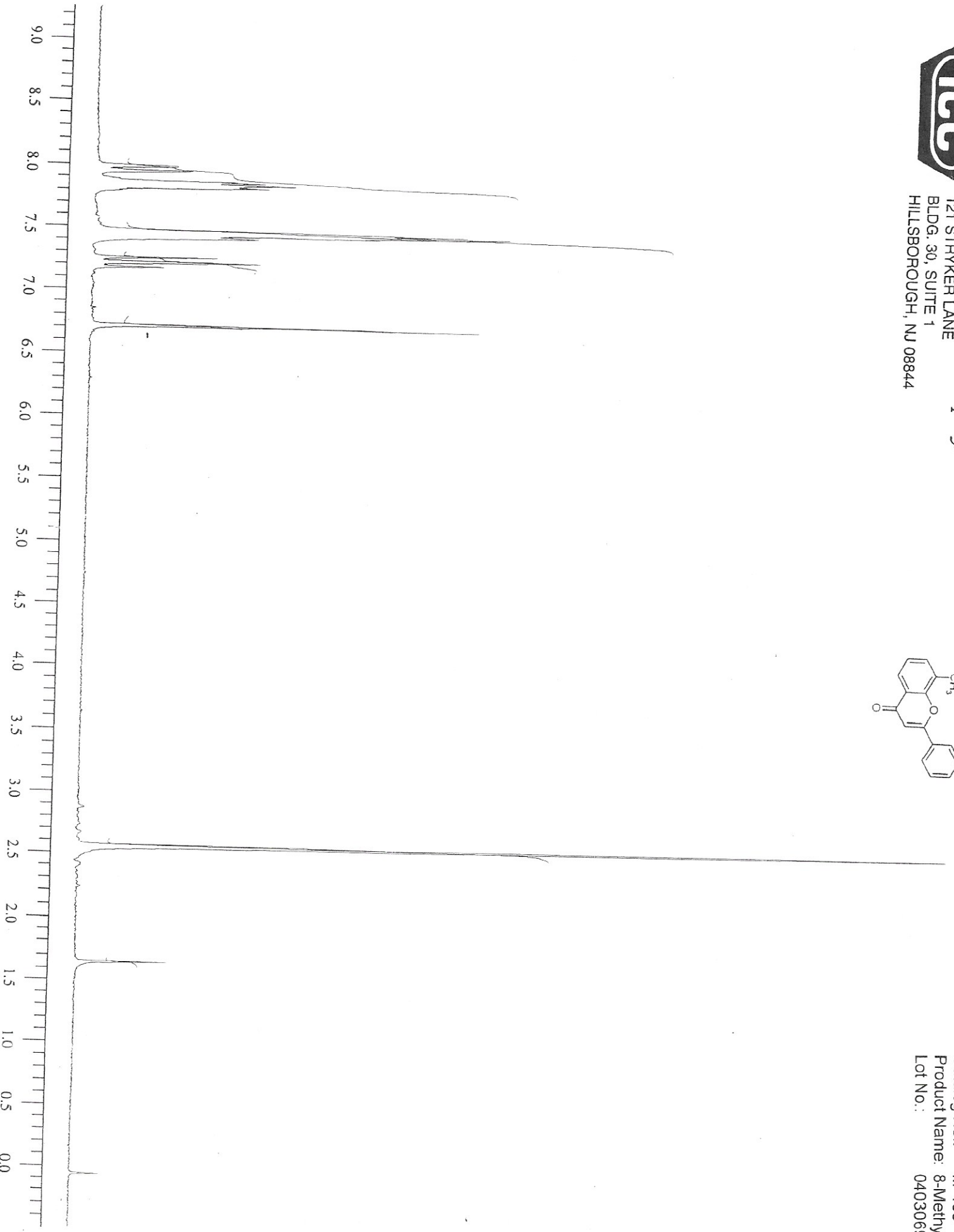
Reviewed and Approved by:  
Sujata Moton  
Sujata Moton  
VP



**INDOFINE** *Chemical Company, Inc.*  
121 STRYKER LANE  
BLDG. 30, SUITE 1  
HILLSBOROUGH, NJ 08844

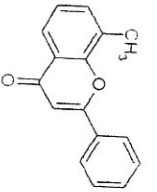


Catalog No.: M-406  
Product Name: 8-Methylflavone  
Lot No.: 0403069





INDOFINE Chemical Company, Inc.  
121 STRYKER LANE  
BLDG. 30, SUITE 1  
HILLSBOROUGH, NJ 08844



Catalog No.: M-406  
Product Name: 8-Methylflavone  
Lot No.: 0403069

PERKIN ELMER

